

# RQB

## Ceramic Encased Wire Wound Resistors



### GENERAL SPECIFICATIONS

Model	Wattage Rating	Resistance Range( $\Omega$ )			Resistance Tolerance
		Glass Fiber Core (GC)	Ceramic Core (CC)	Metal Oxide Film (MO)	
RQB 05	5W	0.1~500	0.1~3.0K	10~27K	$R \leq 1\Omega : \pm 10\%$ $R > 1\Omega : \pm 5\%$
RQB 07	7W	0.2~1.0K	0.3~5.0K	10~56K	
RQB 10	10W	0.5~1.5K	0.3~10K	10~75K	
RQB 15	15W	1.0~1.5K	0.5~12K	10~100K	
RQB 20	20W	1.0~2.0K	0.5~15K	10~100K	

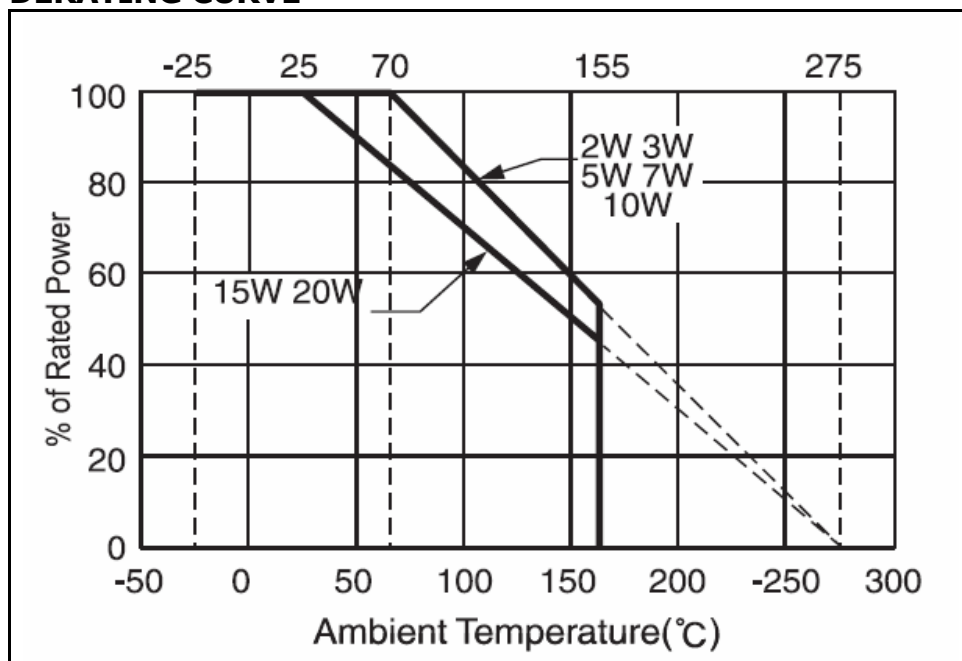
### CHARACTERISTICS

Values in [ ] mean change in  $\Omega$  after test

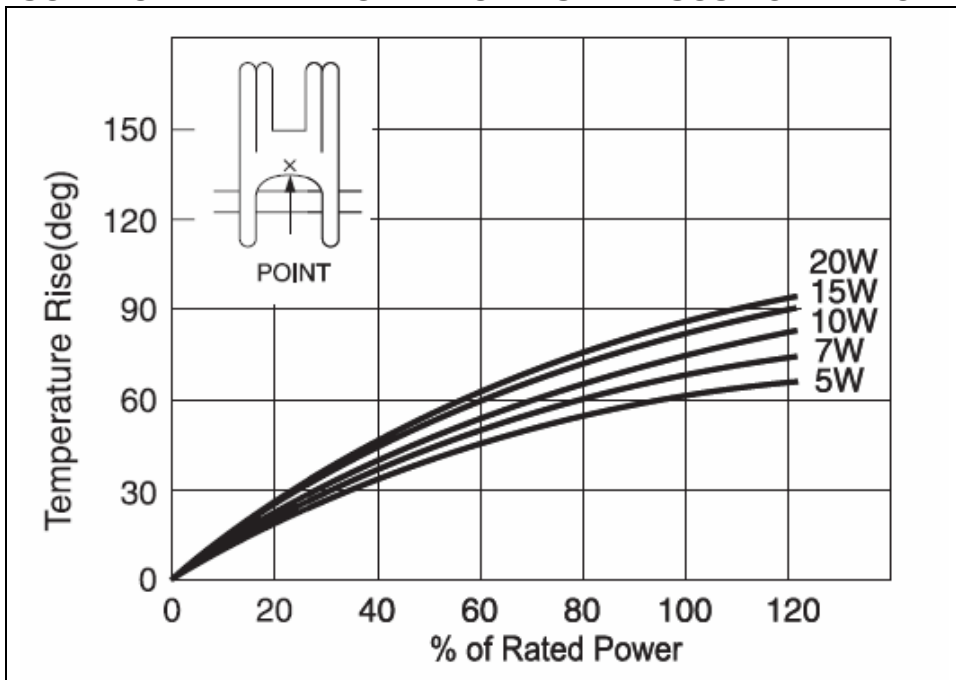
Temperature Range	-25 $^{\circ}$ C~155 $^{\circ}$ C	
Insulation Resistance	DC500V, 20M $\Omega$ Minimum	
Dielectric Withstanding Voltage	AC 1500V for 1minute	
Temp. Coefficient	Less than 1 $\Omega$ :490~1300ppm/ $^{\circ}$ C. More than 1 $\Omega$ :490ppm/ $^{\circ}$ C	
Short Time Overload	$\Delta R \pm [2\% + 0.05\Omega]$	10 Times rated power for 5 sec.
Moisture Resistance	$\Delta R \pm [3\% + 0.05\Omega]$	DC 100V, 40 $^{\circ}$ C 95% RH, 500h
Thermal Shock	$\Delta R \pm [2\% + 0.05\Omega]$	Power Rating 30 min., -25 $^{\circ}$ C 15min.
Moisture Load Life	$\Delta R \pm [3\% + 0.05\Omega]$	40 $^{\circ}$ C 95% RH, 10% Power Rating 90min.-ON
Load Life	$\Delta R \pm [5\% + 0.05\Omega]$	Power Rating 90min.-ON, 30min.-OFF
Solderability	75% Coverage minimum	

Note : Applied voltage : AC RMS voltage

### DERATING CURVE



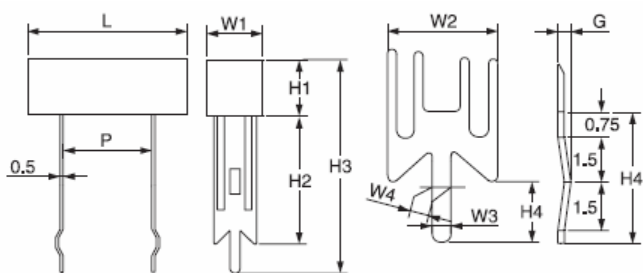
# SURFACE TEMPERATURE INCREASE VERSUS POWER LOAD



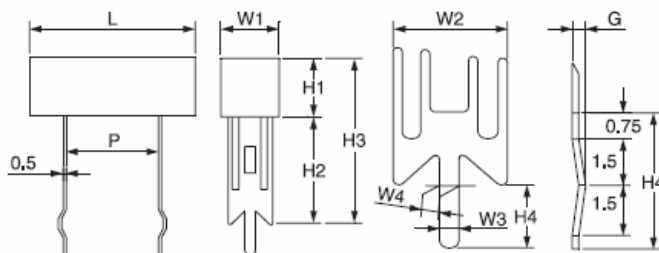
## RQB(s, s3)DIMENSIONS

Power Rating(W)		Dimensions(mm)										
		L	P	W1	W2	W3	W4	H1	H2	H3	H4	G
5	S	27±1.5	15±1.5	9.5±1	7.5±0.3	1.4±0.2	1.6±0.2	9.5±1.0	25+1,-2	39±2	4.5±0.5	1.1
	S3								12+1,-2	25±2		
7	S	35±1.5	22.5±1.5	9.5±1	7.5±0.3	1.4±0.2	1.6±0.2	9.5±1.0	25+1,-2	39±2	4.5±0.5	1.1
	S3								12+1,-2	25±2		
10	S	48±1.5	35±1.5	9.5±1	7.5±0.3	1.4±0.2	1.6±0.2	9.5±1.0	25+1,-2	39±2	4.5±0.5	1.1
	S3								12+1,-2	25±2		
15	S	48±2	32.5±1.5	12.5±1.2	10±0.5	2.5±0.2	2.7±0.2	12.5±1.2	27+1,-2	45±2	5.5±0.5	1.1
	S3								15+1,-2	33±2		
20	S	63.5±2	47.5±2	12.5±1.2	10±0.5	2.5±0.2	2.7±0.2	12.5±1.2	27+1,-2	45±2	5.5±0.5	1.1
	S3								15+1,-2	33±2		

<s-STYLE>

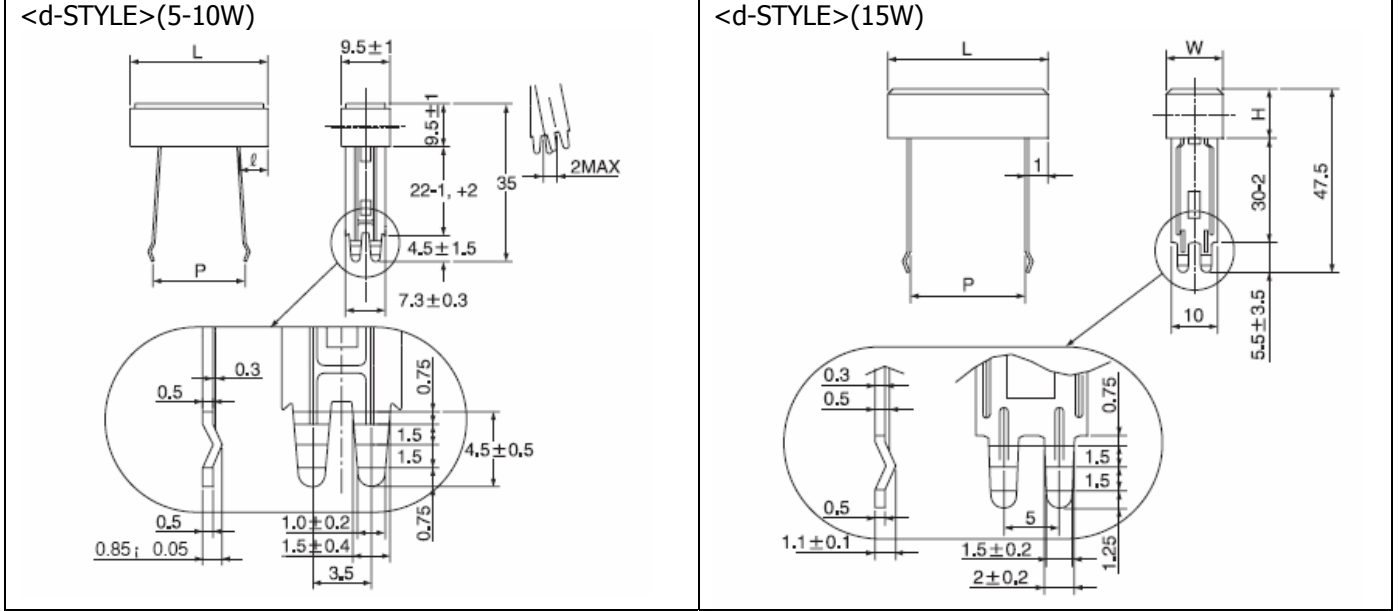


<s3-STYLE>



**RQB(d) DIMENSIONS**

Power Rating(W)	Dimensions(mm)				
	L	W	H	P	ℓ
5	27±1.5	9.5±1	9.5±1	15+6,-2	6±1.5
7	35±1.5	9.5±1	9.5±1	22.5+6,-2	6.25±1.5
10	48±1.5	9.5±1	9.5±1	35+6,-2	6.5±1.5
15	48±2	12.5±1	12.5±0.2	32+4,0	7.5±1.5



**ORDERING PROCEDURE EXAMPLE**

