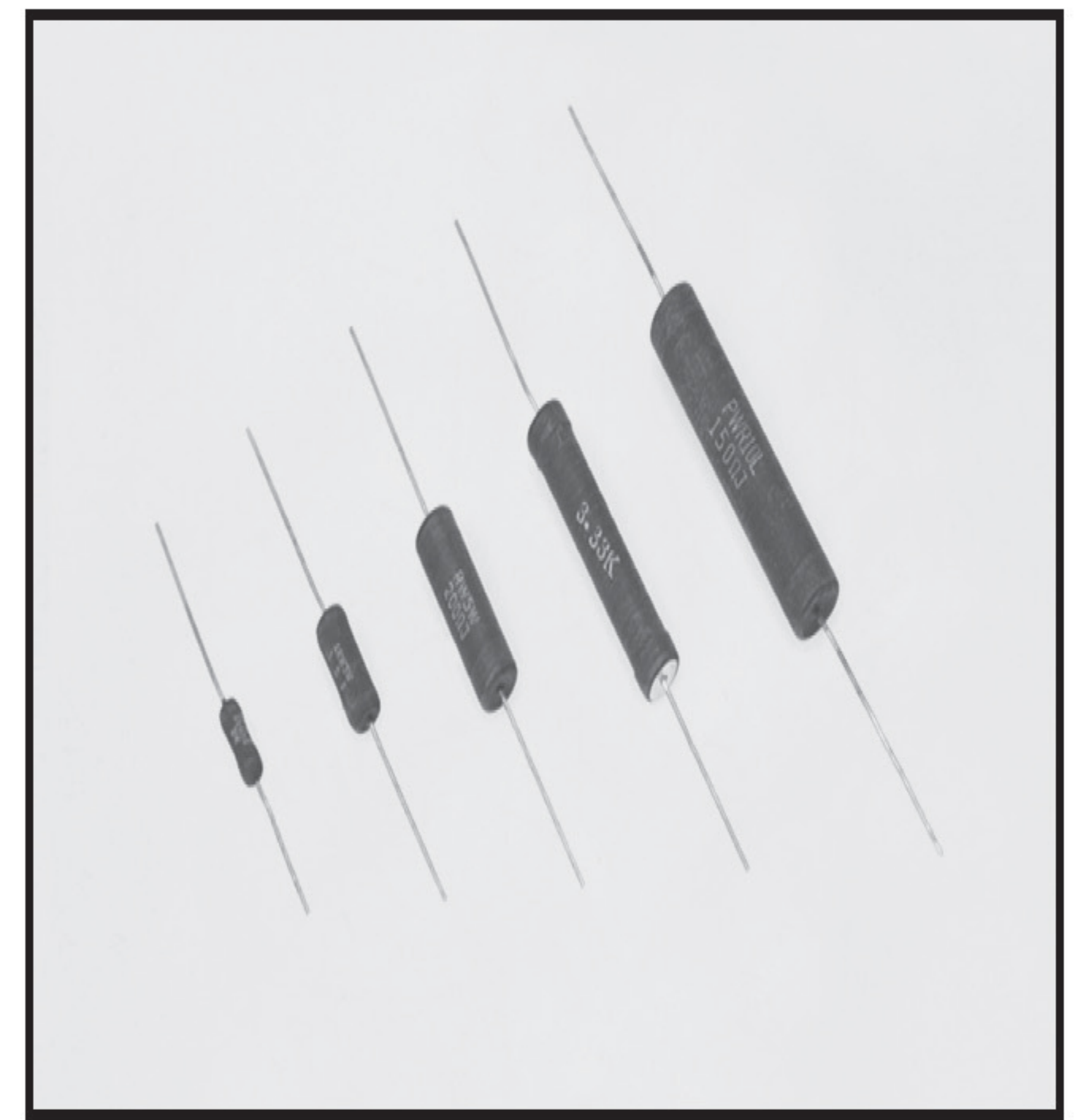


Precision Wirewound Resistors

- Complete Welded Construction
- Wide Resistance Range: 0.1Ω~100KΩ
- Tolerance from 0.05%
- Available on Tape: 1W to 10W
- High Temperature Resistant Silicone Coating
- Available in Non-Inductive Style (Type N)
- Special Matching Available (T.C.R and Tolerance)



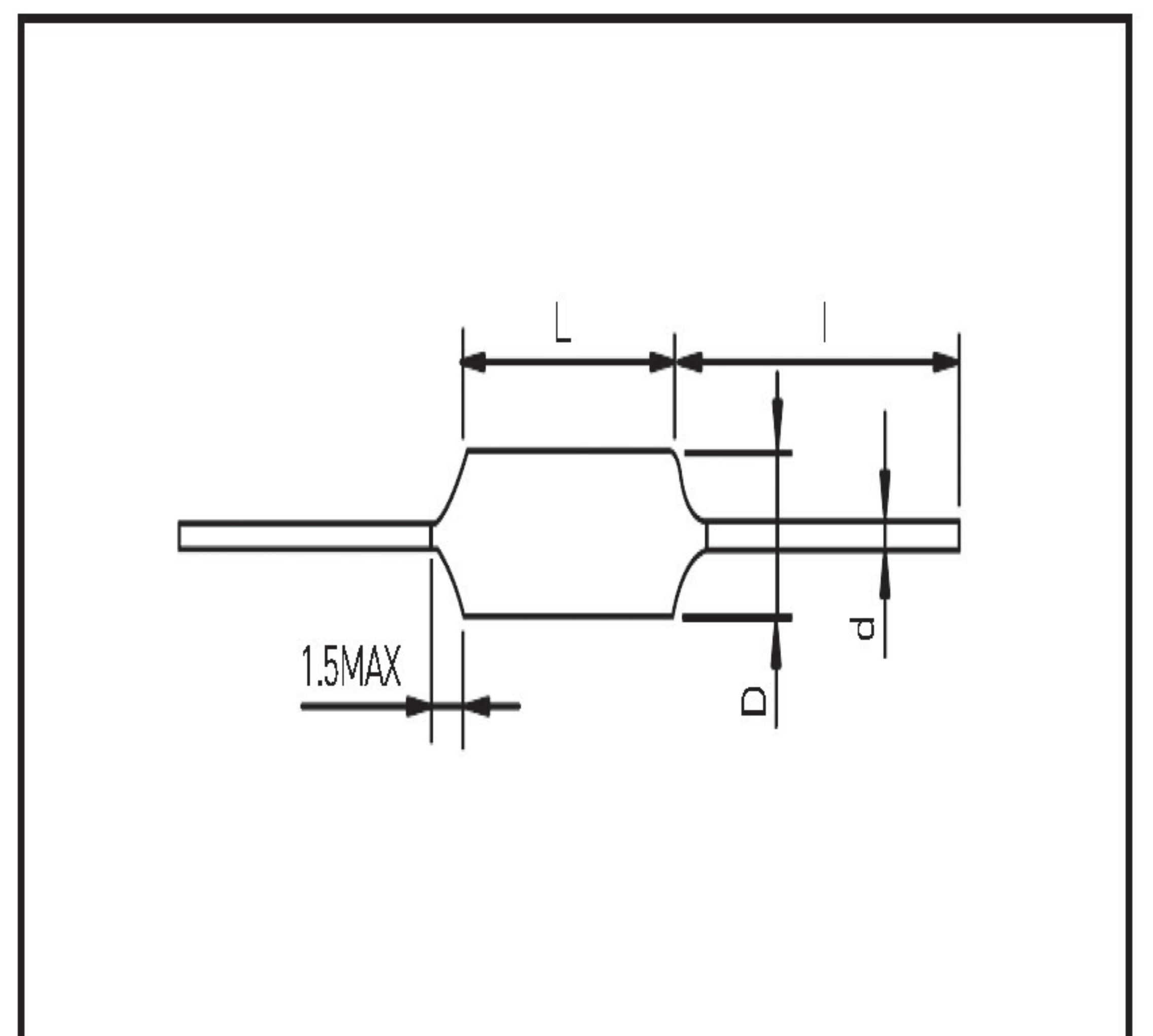
GENERAL SPECIFICATIONS

Model	Power Rating[W]	Max. Working Voltage[V]	Resistance Range[Ω]		Tolerance (%)
			W*	N**	
PWR 0.5	0.5	20	0.1 ~ 3K	0.1 ~ 1.5K	A [±0.05] B [±0.1] C [±0.25] D [±0.5] F [±1] G [±2]
PWR 1	1	50	0.1 ~ 8K	0.1 ~ 3K	
PWR 2	2	100	0.1 ~ 10K	0.1 ~ 4K	
PWR 3	3	200	0.1 ~ 18K	0.1 ~ 9K	
PWR 5	5	400	0.1 ~ 35K	0.1 ~ 17K	
PWR 7	7	450	0.1 ~ 50K	0.1 ~ 25K	
PWR 10S	10	700	0.1 ~ 70K	0.1 ~ 35K	
PWR 10L	10	800	0.1 ~ 100K	0.1 ~ 50K	

W*: Inductive, N**: Non-inductive

DIMENSIONS [mm]

Model	Dimensions [mm]			
	D±0.8	L±1.5	d±0.02	l±3
PWR 0.5	3.30	10.0	0.7	37
PWR 1	4.00	12.0	0.8	37
PWR 2	4.70	13.8	0.8	35
PWR 3	5.90	15.7	0.8	35
PWR 5	8.52	22.5	0.8 / 1.0	44 / 35
PWR 7	8.52	24.5	0.8 / 1.0	44 / 35
PWR 10S	8.52	39.2	0.8 / 1.0	35
PWR 10L	10.5	46.2	0.8 / 1.0	33

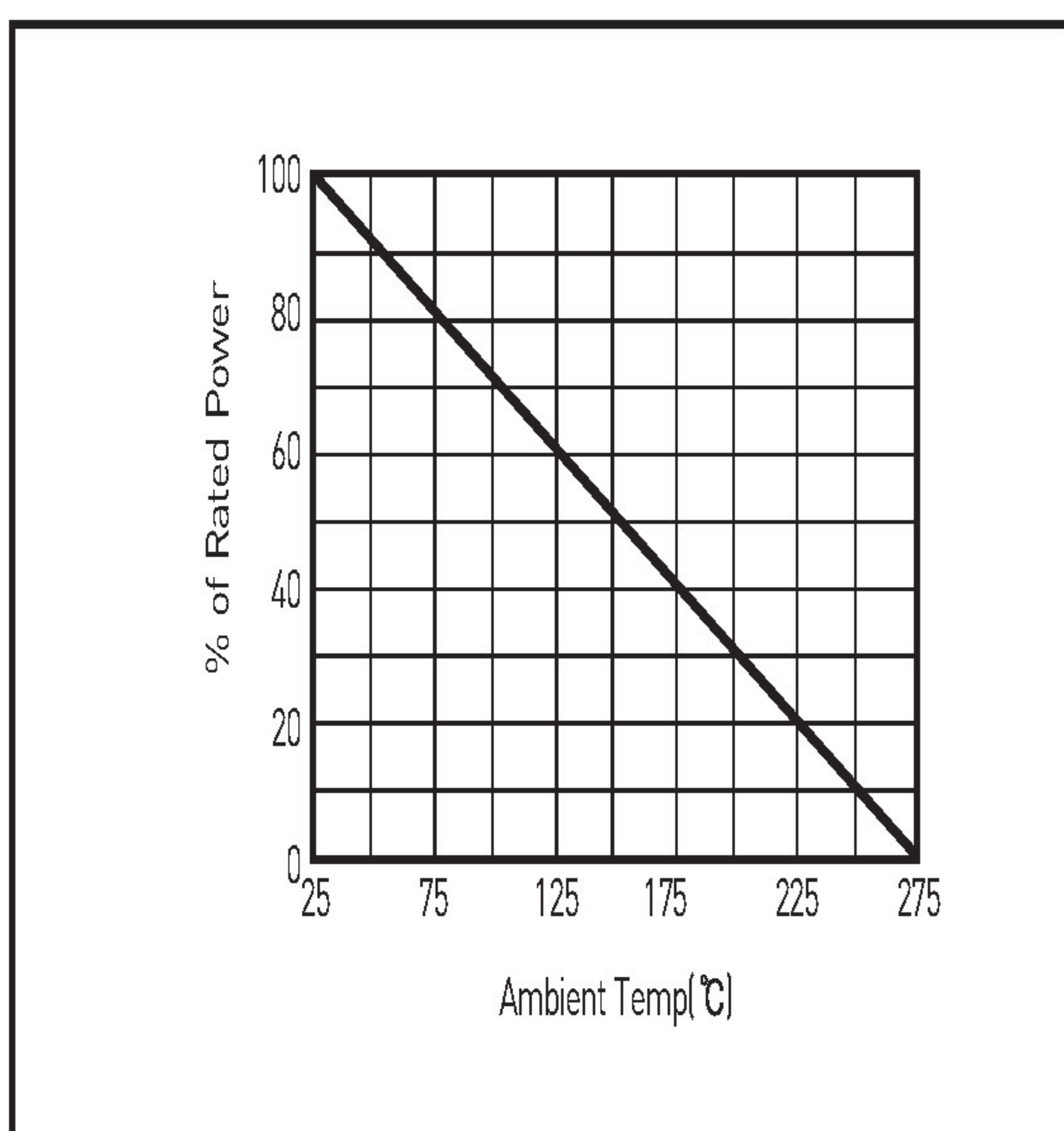


CHARACTERISTICS

Insulation Resistance	1GΩ min. dry.	DC500V, 1 minimum
Dielectric Withstanding Voltage	±[0.1%+0.05Ω]ΔR	500VAC, 1 minimum
Temp. Coefficient		-0.99Ω: ±90ppm/°C 1~9.9Ω: ±50ppm/°C 10Ω~: ±20ppm/c
Short Time Overload	±[0.2%+0.05Ω]ΔR	1W-3W: 5 Times rated power for 5 sec. 5W-10W: 10 Times rated power for 5 sec.
Thermal Shock	±[0.2%+0.05Ω]ΔR	-65 °C(30min.), 25 °C, 150 °C (30min.), 25 °C, 5cycle
Low Temp. Storage	±[0.2%+0.05Ω]ΔR	-65°C for 24 hours
High Temp. Exposure	±[0.5%+0.05Ω]ΔR	275 °C for 2 hours
Terminal Strength	±[0.1%+0.05Ω]ΔR	4.5kg for 10 sec.
Solderability	95% coverage minimum	230 °C for 5 sec.
Load Life	±[0.5%+0.05Ω]ΔR	Power Rating 90minutes on, 30minutes off, 2000 hours

*NOTE : Applied voltage : AC RMS voltage

DERATING CURVE



ORDERING PROCEDURE EXAMPLE

