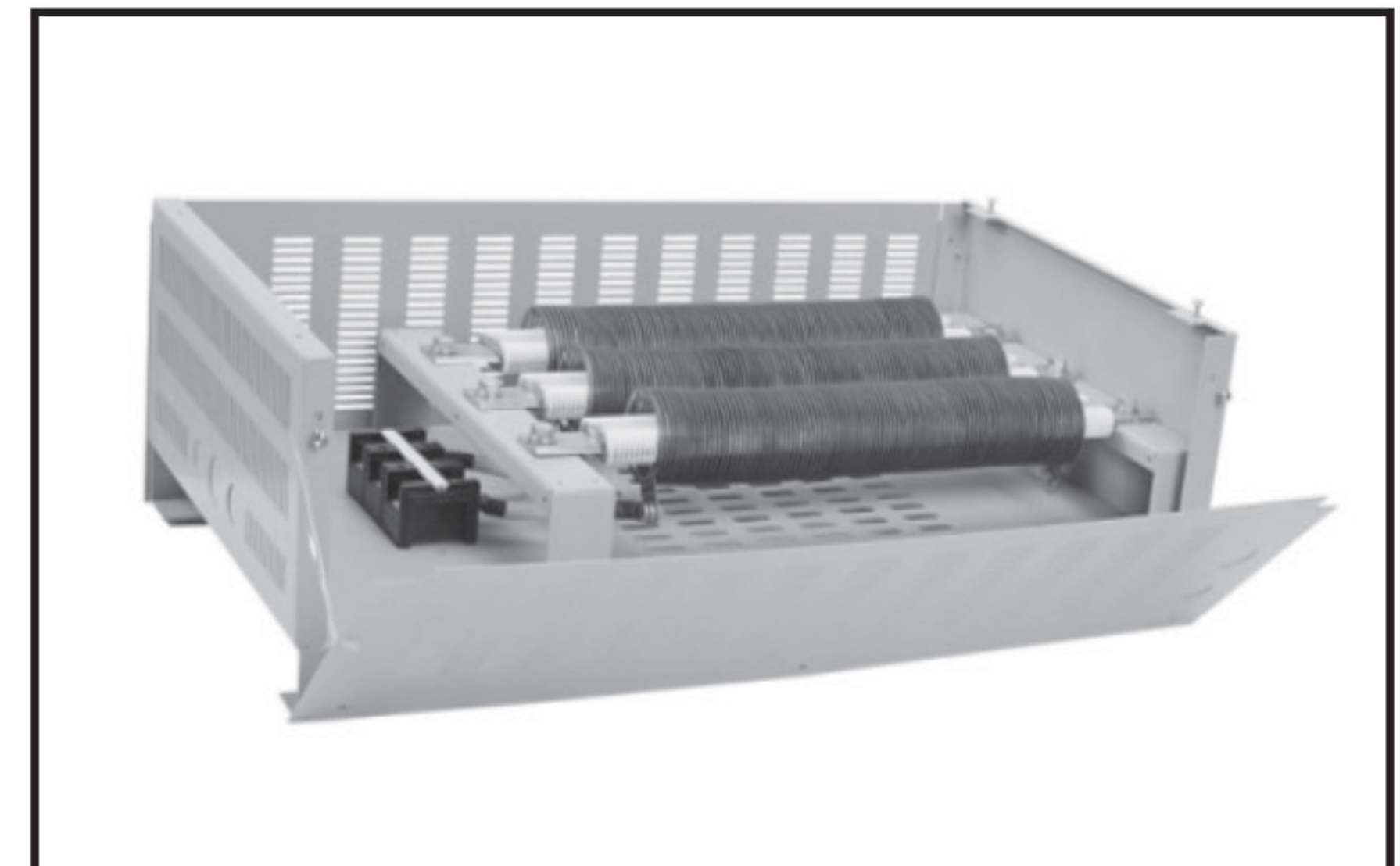


# Edge Wound Resistor Assemblies

The EW series of metal clad edge wound resistors are designed for use in super high power inverters. The basis for these models are edge wound elements, surrounded by a metal case, which conforms to international safety specifications. The steel case is powder coated and baked for durability.

## GENERAL SPECIFICATIONS

Model	Power Rating		Resistance Range[Ω]	Resistance Tolerance (%)
	With Fan	In Free Air		
EWS 10K	4.5 KW	3KW	0.5 ~ 3.0	J [±5.0] K [±10]
EWS 13K	6 KW	4KW	0.7 ~ 4.0	
EWS 17K	7.5 KW	5KW	0.9 ~ 5.0	
EWS 20K	9 KW	6KW	1.0 ~ 6.0	
EWS 26K	12 KW	8KW	1.4 ~ 8.0	
EFW 10K	4.5 KW	3KW	3.1 ~ 18	
EFW 13K	6 KW	4KW	4.2 ~ 24	
EFW 17K	7.5 KW	5KW	5.2 ~ 30	
EFW 20K	9 KW	6KW	6.1 ~ 36	
EFW 26K	12 KW	8KW	6.4 ~ 48	



Note:  
The EWS series use SUS 304 resistance wire.  
The EFW series use FCHW resistance wire.

## CHARACTERISTICS

Values in [ ] mean change in Ω after test

Temperature Range	-55°C ~ 200°C	
Insulation Resistance	20MΩ minimum	
Dielectric Withstanding Voltage	Available options: AC1500V, 3500V, 4500V, 5400V(maximum. leakage current: 2mA)	
Temp. Coefficient	EWS: ±800ppm/°C max. EFW: ±260ppm/°C maximum	
Short Time Overload	±[2%+0.05Ω]	10 X Power rating 5 sec.
Moisture Resistance	±[3%+0.05Ω]	40°C, 95% RH, DC100V case to terminal, 500 hours
Thermal Shock	±[2%+0.05Ω]	Power rating 30 minutes, -25°C 15 minutes

## DIMENSIONS [mm]

Model	Approx. Weight [Kg]	Dimensions [mm]		
		D±5	W±4	H±4
EWS10K	17 / 17.5(FAN)	700	356	191
EWS13K	23.0 / 23.5(FAN)	700	446.5	191
EWS17K	25.0 / 25.5(FAN)	700	446.5	191
EWS20K	26.5 / 27.0(FAN)	700	356	280
EWS26K	35.0 / 35.5(FAN)	700	446.5	280
EFW10K	15.0 / 15.5(FAN)	700	356	190
EFW13K	20.0 / 20.5(FAN)	700	446.5	191
EFW17K	21.5 / 22.0(FAN)	700	446.5	191
EFW20K	22.5 / 23.0(FAN)	700	356	280
EFW26K	30.0 / 30.5(FAN)	700	446.5	280

## ORDERING PROCEDURE EXAMPLE

